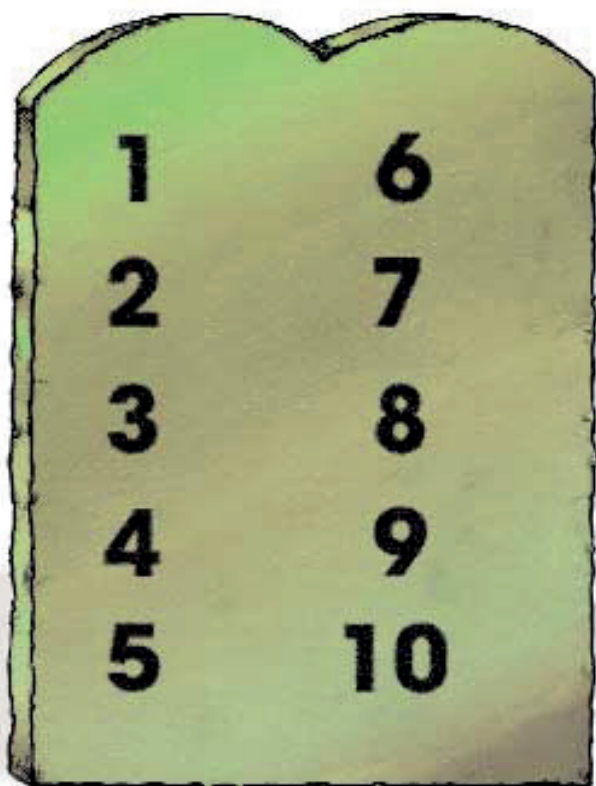
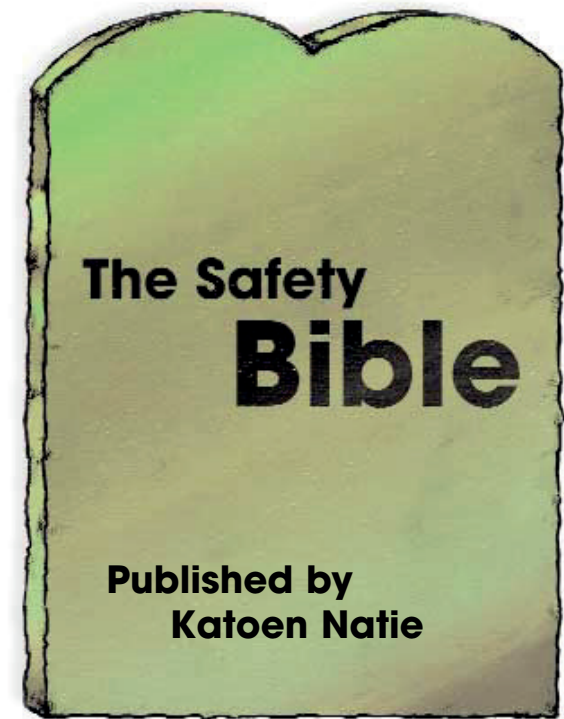


# The Safety Bible





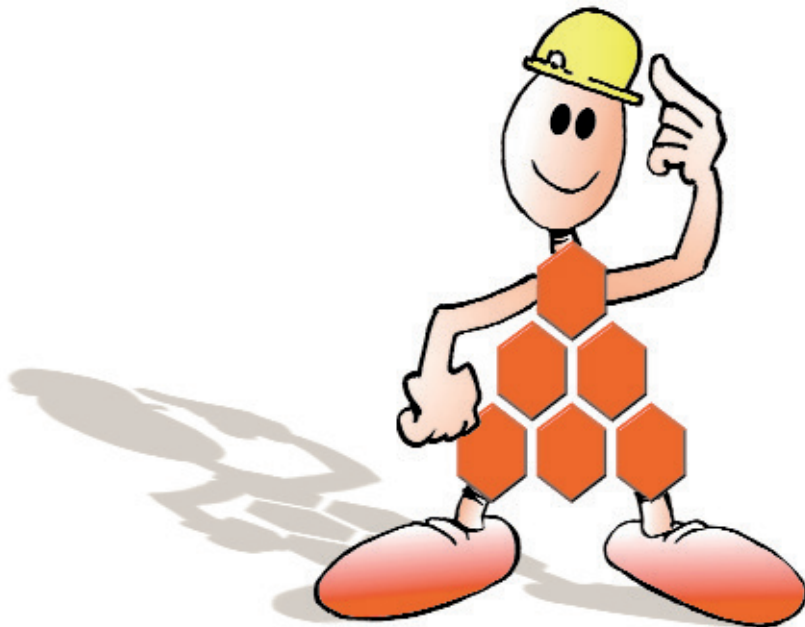
Copyright by Katoen Natie  
and by Dicky for the artwork.  
Nothing of this edition may be duplicated  
and/or made public through print, photocopy, microfilm,  
or in any other way without prior  
written permission of the publisher.  
Produced by Lannoo NV, Tielt.

A group that is different and better:  
**our people make the difference.**

Idea: Fernand Huts  
Design & Artwork: Dicky



# Safety policy of Katoen Natie



It is the aim of Katoen Natie to create a working environment that is as safe as possible for its staff, clients, and suppliers.

**This is why we design the**

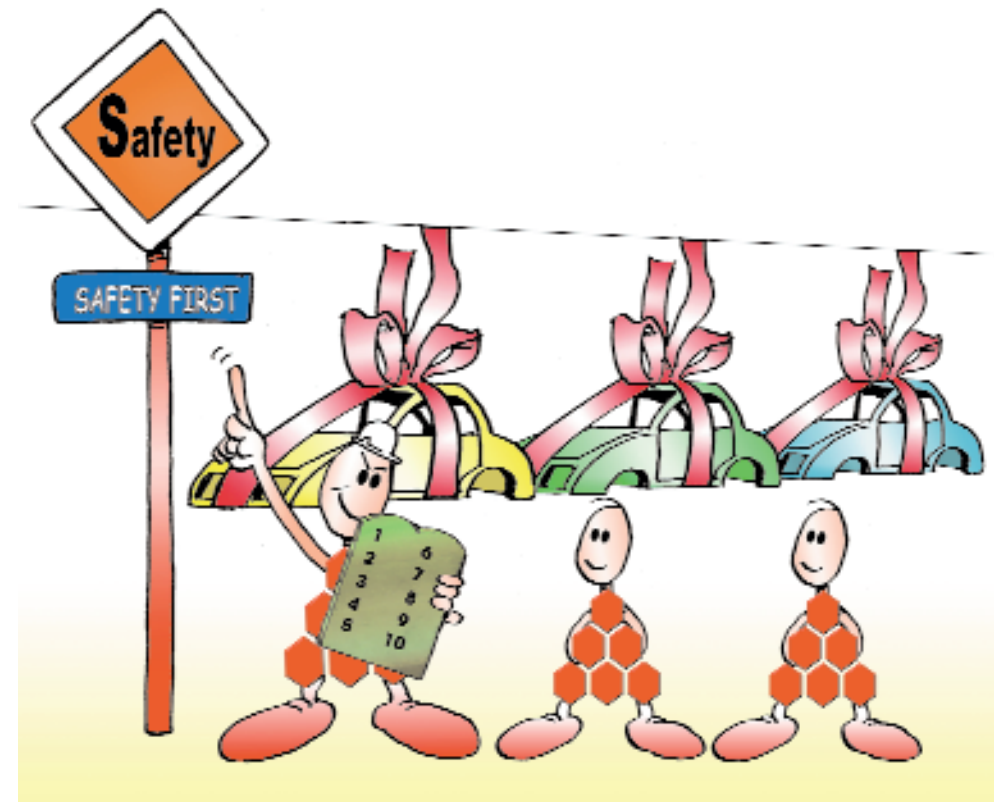
**KATOEN NATIE SAFETY SYSTEM**

By applying the 10 Safety Commandments of Katoen Natie, we want to prevent (work-place) accidents and by doing so contribute to the general wellbeing of our people and the environment.



# Safety First!

The 10 Safety Commandments of KTN prevail over all KTN procedures, operational working method and productivity. These safety commandments are based on all current applicable laws. In practice, this means that they should never be overlooked and are always applicable regardless of the situation.

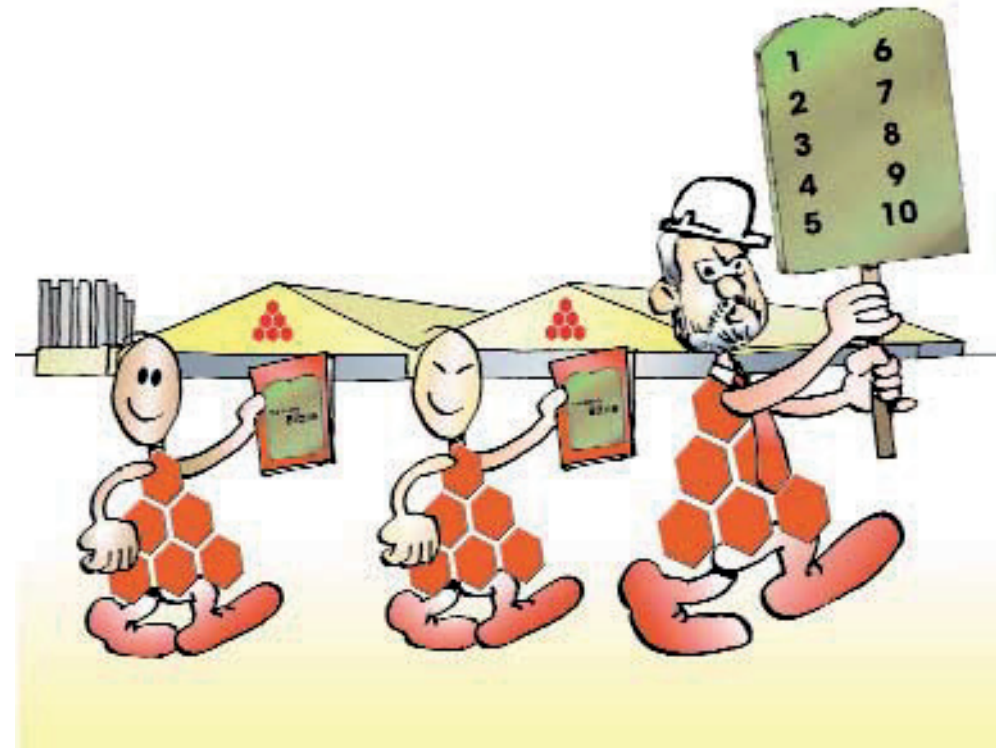


## Safety is the responsibility of the management

The 10 Safety Commandments of KTN are endorsed by management and are a top priority in the policy and the day-to-day running of the companies.

Implementation and compliance with the 10 Safety Commandments of KTN is one of the main evaluation criteria for the management and is discussed at each Board of Directors.

The safety consultants working in the various departments must develop sufficient tools to be able to evaluate the safety policy accurately.



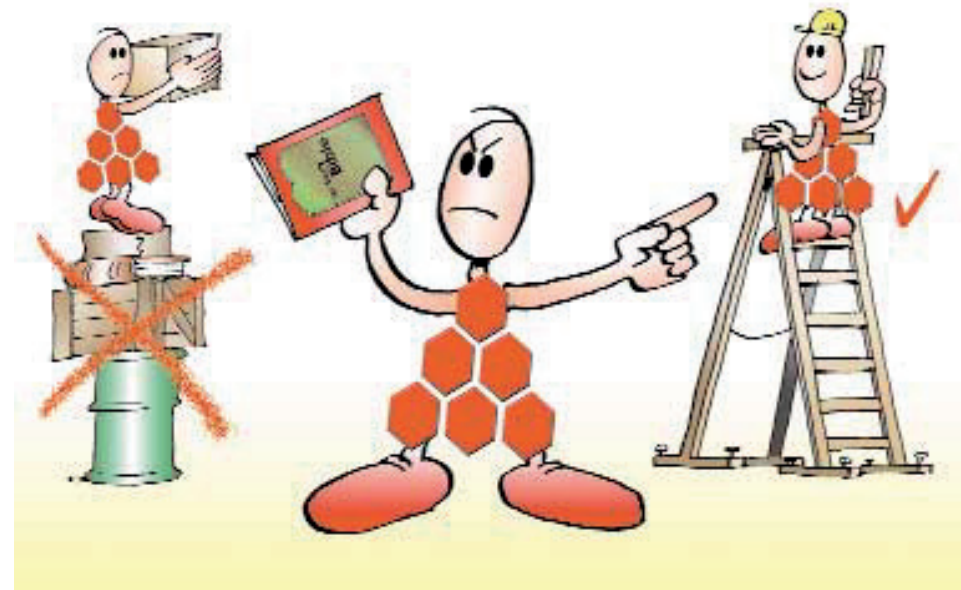
## Safety is of essential importance when buying and using equipment

All equipment must meet all statutory provisions regarding safety and are periodically tested and checked. Safety is the most important criterion when purchasing and maintaining equipment.



## Recording and assessing risks

All risks at the workplace must be listed and assessed by applying dynamic risk analyses. Based upon these dynamic risk analyses, the necessary measures must be taken to improve safety in the workplace (i.e. after the assessment an adjustment on the work floor must follow, if necessary).





## Report, investigate and define corrective actions for all incidents and accidents

Each terminal must elaborate a procedure for reporting and registration of accidents and incidents and for periodically publishing its results.  
The management must follow-up and register the costs of accidents and incidents.  
The management launched a procedure to identify the causes of accidents and incidents and to propose corrective measures.



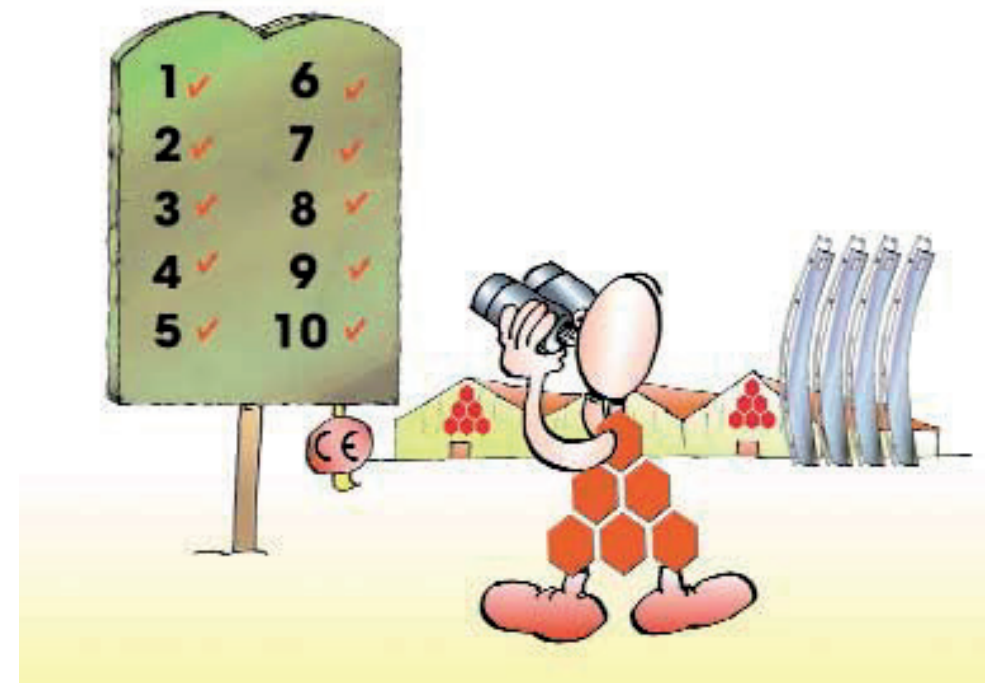


## Safety audit on the work floor

All locations are periodically inspected and audited by the management on the basis of a fixed inspection system (in this respect, see KTN Safety System Checklist) to report unsafe situations.

The conclusions of these audits must be translated into action points to improve safety on the work floor.

A trend analysis must prove that these audits and inspections result in a reduced number of incidents and accidents.



## Safety Training Sessions for all

All staff members must be given sufficient training sessions related to the safety on the work floor and the awareness regarding safety with a view to reducing the number of accidents and incidents to zero.

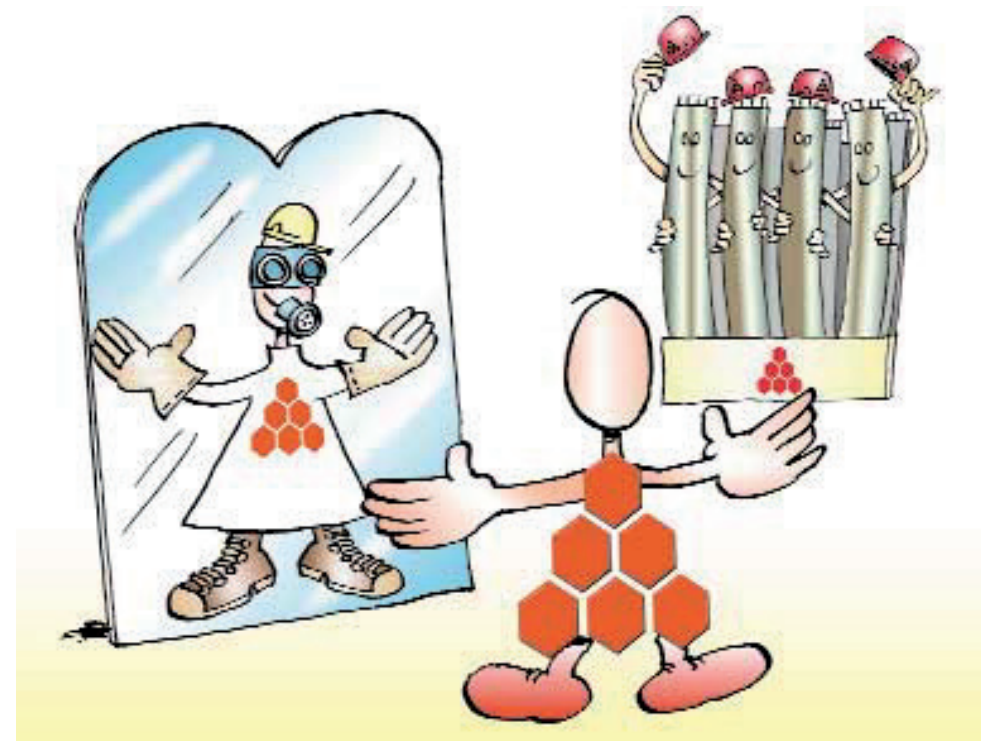
Staff members with an increased risk of dangerous situations are selected for this and given additional training. This applies to new, temporary, and permanent employees.

New and temporary employees are handed an introductory brochure giving special attention to safety.



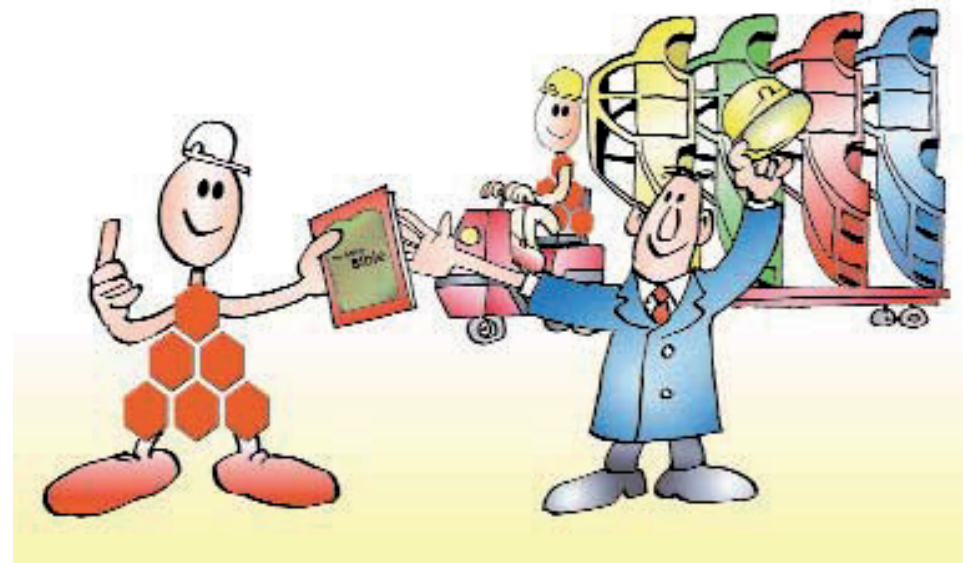
## Personal safety equipment

All business units provide approved personal protective equipment adjusted to the specific requirements of each location. The local supervisors in charge check the correct use of personal safety equipment.



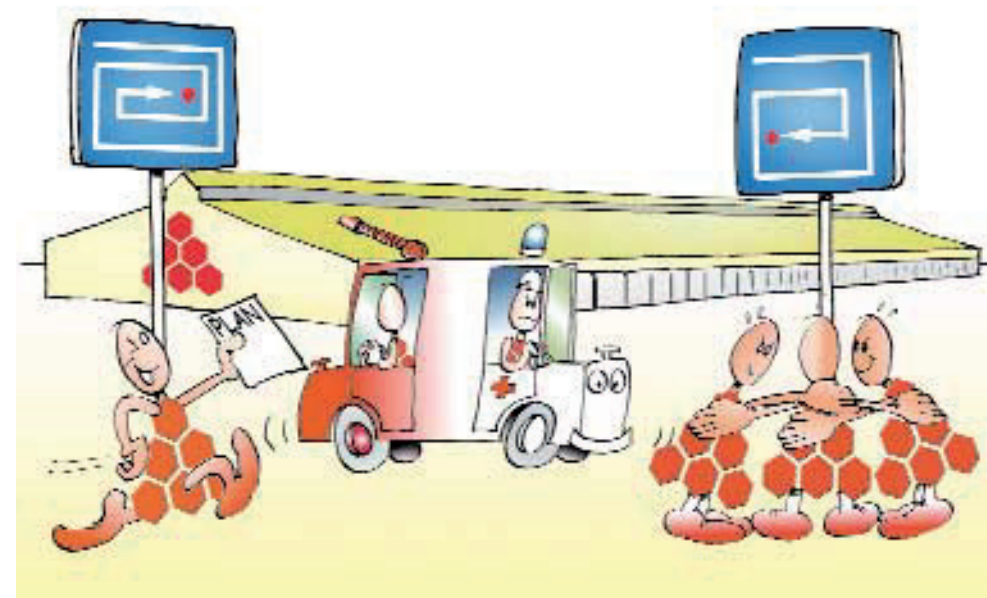
## Safety for third parties

Safety must also be a priority for third parties present on premises.

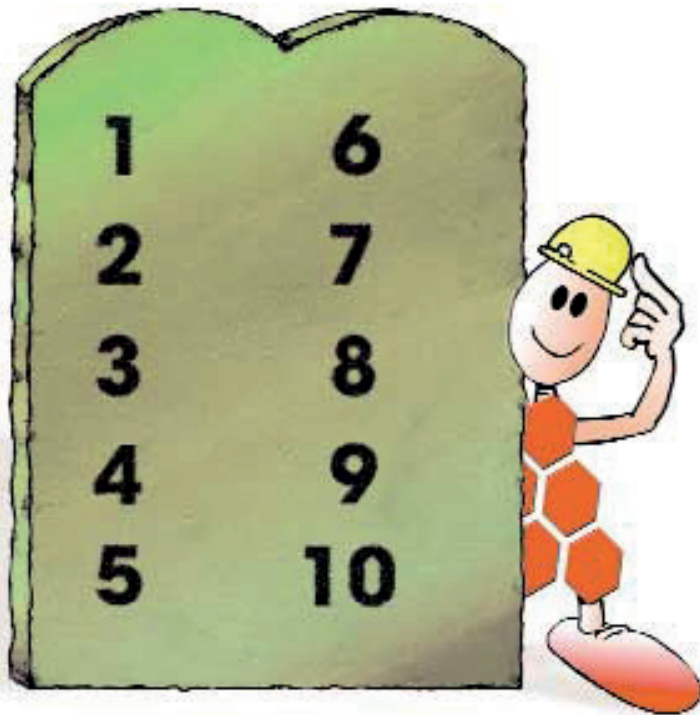


## Emergency and Traffic Plan

The development and implementation of a safety plan and the regular organisation of fire and evacuation drills is the job of every local supervisor in charge.



## Practice



The 10 Safety Commandments of KTN must be translated per business unit, per operating company, and even per terminal into specific and practical action plans, procedures, operating methods, follow-ups, checks, etc.

This is the responsibility of the entire hierarchical line, i.e. every Business Unit Manager, Managing Director, Terminal Manager, local supervisor in charge in combination with the local safety consultant.

Every local supervisor in charge shall permanently see to it that the 10 Commandments be complied with.

